

TRUST

▲ Beyond Korea No.1⁺

ktl

BEYOND KOREA NO.1⁺



Ministry of Trade,
Industry and Energy

Affiliated organization established
in accordance with Article 41
of the Industrial Technology
Innovation Promotion Act



Ministry of Science
and ICT

Specific research institute
under Article 2 of the
Specific Research
Institutes Support Act



Ministry of Economy
and Finance

Public institution under
Article 4 of the Act on the
Management of
Public Institutions



Ministry of Economy
and Finance

Institute for research and
development purposes under
Article 5 of the Act on the
Management of Public Institutions



Support for Establishment
by UNESCO
Since 1966



Korea's only comprehensive
public testing and
certification organization

www.ktl.re.kr

(Postal Code: 52852) KTL, 10 Chungui-ro, Jinju-si, Gyeongsangnam-do, Korea TEL. +82-80-808-0114

Vol.8 Copyright 2022 © Korea Testing Laboratory All Right Reserved.



ktl Korea Testing
Laboratory



▲ Founding Background April 13, 1966

Korea Fine Instruments Center (FIC) established with aid from the UNESCO for precision and quality improvement in industrial sites

▲ Grounds for Establishment

Article 41 of the Industrial Technology Innovation Promotion Act
(Establishment of Korea Testing Laboratory)

▲ Purpose

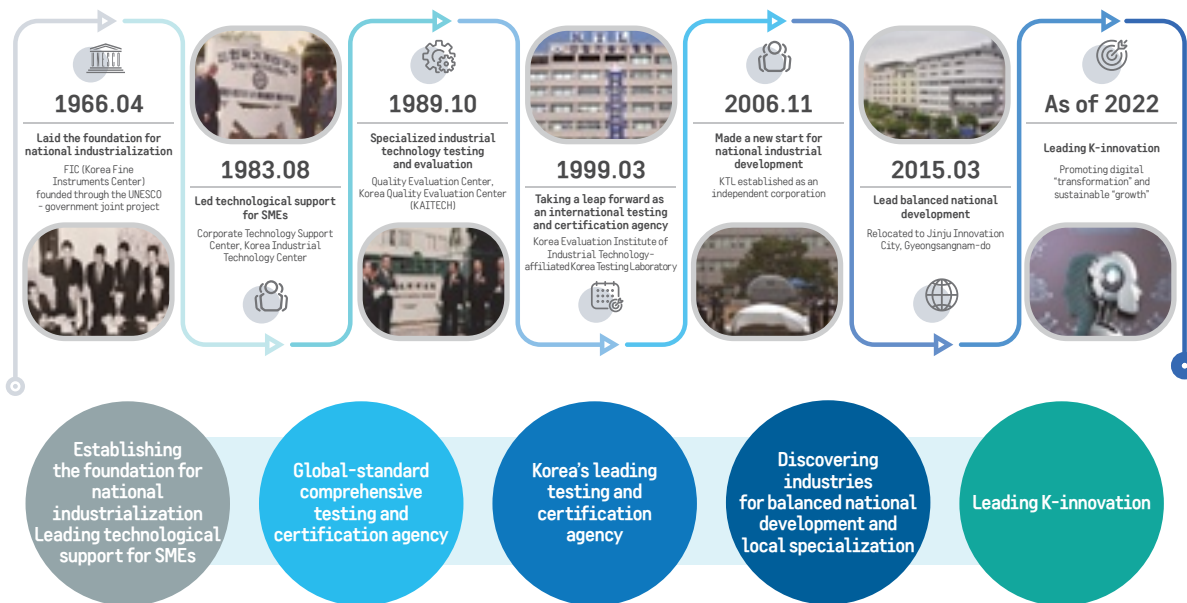
To support efficiently the testing and evaluation of outcomes of innovation of technology and development, etc. of technology therefor (Paragraph 1, Article 41)

▲ Main Objective

To verify **objectively and accurately** if the outcomes of R&D meet the performance and safety requirements in domestic and overseas markets

Secure public safety, improve export competitiveness,
and contribute to national backbone industry development

▲ Main History



▲ Legal Stature

Highest financial integrity



Ministry of Trade, Industry and Energy
Affiliated organization established in accordance with Article 41 of the Industrial Technology Innovation Promotion Act



Ministry of Science and ICT
Specific research institute under Article 2 of the Specific Research Institutes Support Act



Ministry of Economy and Finance
Public institution under Article 4 of the Act on the Management of Public Institutions



Ministry of Economy and Finance
Institute for research and development purposes under Article 5 of the Act on the Management of Public Institutions

Promote future growth and practice sustainable management based on **"transformation"** and **"growth"**

Execute industrial promotion in all directions, such as securing technology standards, providing technological support, and conducting performance verification, for the new industrial fields of the future

Leading the future business of testing and certification

- ▲ **Aerospace** Expand the space environment test, establish UAM safety and performance infrastructure
- ▲ **Digital** Develop technologies for digital transformation (IDX) conformance, evaluate and certify the performance of software convergence products
- ▲ **Future Mobility** Verify and evaluate self-driving vehicle parts and products, establish the foundation for electric vehicle charger conformance and interoperability evaluation
- ▲ **Carbon Neutrality** Verify technologies for recycling industrial byproducts, implement the K-hydrogen certification system, provide a used battery test service

Strengthening industry-centric public value creation

- ▲ **Certification System Advancement** Support the acquisition of Korean and overseas certifications, dominate international standards for new convergence products,
- ▲ **Public Safety and Health** Improve the reliability of national defense, verify aviation security equipment performance, provide environmental technology-related total service
- ▲ **Shared Growth** Develop a professional technological training program, discover and provide customized services for specialized industries by region

Internalizing the KTL-type ESG management system

- ▲ **Environmental (E)** Strengthen climate change response, secure and save energy, support solutions for environmental issues
- ▲ **Social (S)** Secure safety for consumers and across the supply chain, create social value, create an organizational culture of safety and happiness
- ▲ **Governance (G)** Enhance stakeholder value by practicing integrity and ethical management at citizens' eye level and operating a zero-defect disclosure system

Reinventing the management system

- ▲ **Work Place Innovation** Digitalize the operation process, upgrade the cybersecurity and safety/health/environment management system
- ▲ **Establishment of Communication and Cooperation Culture** Create an advanced, sound organizational culture based on horizontal communication and trust

KTL leading future industry growth

KTL protecting public safety

KTL, a partner for corporate growth

KTL leading balanced regional development

KTL practicing ESG management

Beyond Korea No.1+

The nation's leading testing and certification agency that grows with citizens

Leading Future Industry Growth, Securing Public Safety

KTL leading future industry growth



KTL studies evaluation methods for technological performance and safety in order to contribute to the successful establishment of the Fourth Industrial Revolution technologies.

▲ Leading Fourth Industrial Revolution

Future mobility, artificial intelligence/intelligent information, IT convergence, aerospace, smart national defense, robot

▲ Promoting industrial digital transformation

Digital platform, smart laboratory, future communication

▲ Advancing the low-carbon, green economy

Carbon neutrality and resource circulation R&D, clean hydrogen certification system, smart green industrial complex, electric vehicle, intelligent power network, mid- to large-scale secondary cell, renewable energy

KTL protecting public safety

To protect public safety, KTL studies the safety testing and evaluation method for various industrial sectors.

▲ Public safety

Performance and integrity test for environmental measuring equipment, simple measuring device performance certification, eco-friendly product testing, product safety, air purifier testing and evaluation

▲ Industrial safety

Software safety, environmental facility testing, inspection, and performance examination, measurement and analysis of environmental pollutants

▲ National safety

Electromagnetic conformance testing and evaluation for the backbone industry, performance verification of nuclear power plant devices, facilities, and parts, aviation security equipment, performance hall safety, testing of and technological consulting for railway parts

Supporting Corporate Growth, Practicing ESG Management

KTL, a partner for corporate growth



KTL grows with companies by providing a wide range of one-stop services including performance test on corporate technological outcomes and testing and evaluation across industrial sectors, and measuring equipment correction.

▲ Providing one-stop testing service

Correction and testing service, noise and vibration testing and performance evaluation, testing and evaluation of medical instruments and supplies, testing and evaluation of materials, conformance test for wireless/electromagnetic equipment, energy efficiency test, commercial reference material business, certification of composite materials for aircraft

▲ Strengthening corporate competitiveness

Industrial technology training, K Mark/KTL mark certification, conformance test and inspection for procurement item registration, K-STAR company fostering

▲ Government-commissioned testing services

No.	Ministry	Field	No.	Ministry	Field
1	Ministry of Trade, Industry and Energy	Energy efficiency, standby power testing	8	Ministry of Employment and Labor	Safety certification for hazardous machinery and instruments
2	Korean Agency for Technology and Standards	KC testing, certification, and correction	9	Ministry of Food and Drug Safety	Medical device permit
3	Ministry of Land, Infrastructure and Transport	Aviation security equipment performance certification	10	Nuclear Safety and Security Commission	Nuclear power plant device performance verification
4	Ministry of Science and ICT	Electromagnetic and software-related evaluations	11	Public Procurement Service	Inspection of procurement items
5	Ministry of Culture, Sports, and Tourism	Inspection of performance halls and sports equipment, etc.	12	Korea Forest Service	Quality inspection of timber products based on standard
6	Ministry of Environment	Environmental measuring device integrity test, etc.	13	Ministry of Oceans and Fisheries	Testing for designation of ship equipment
7	National Institute of Environmental Research	Simple particulate matter measuring device performance certification, etc.			

KTL practicing ESG management



With the goal of creating a better future, KTL practices sustainable management based on its professional competencies and expertise.

▲ Environmental E

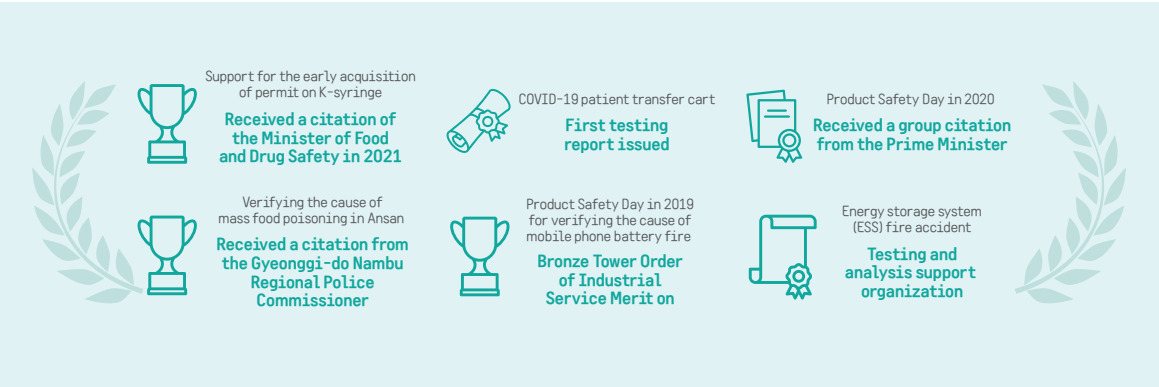
Strengthen climate change response, secure and save energy, support solutions for environmental issues, disseminate eco-friendly products

▲ Social S

Secure safety for consumers and across the supply chain, create tangible social value, revitalize the local economy, strengthen the safety network, achieve zero serious accidents, create an organizational culture for employees' happiness

▲ Governance G

Establish an integrity and ethics management system, enhance stakeholder value



Supporting the Acquisition of Domestic and Overseas Certifications

Market Development and Export Activation

Provide various services such as testing, inspection, correction, and certification according to standards and technological criteria



Overseas Certification
Information System
www.certinfo.kr



Provide consulting service for and support the acquisition of international test report (IECEE-CB) and overseas certifications for export

Provide information on overseas certifications, such as guidelines for the acquisition of certification by country and list of regulatory items

Support the preemptive response to TBT by entering into MOUs with approx. **160 overseas testing and certification agencies in 55 countries**

Establish an Asia-wide certification system centering on ANF member countries

*ANF (Asia Network Forum)
A consultative body of certification agencies representing Asian countries, such as Korea, Japan, China, Taiwan, Singapore, and Vietnam, to perform international cooperation activities

160 organizations
in 55 countries,
the largest in Korea

Supporting the
acquisition of overseas
certifications based on MOU

Asia Network Forum
ANF

Establishing an Asia-wide
certification system centering
on ANF member countries

1st

1st in Korea
for internationally
accredited testing
report issuance

ktl NETWORK

KTL leading balanced regional development

With the nationwide network, KTL swiftly supports local companies, discovers specialized industries for regional areas, and contributes to regional industrial and economic development accordingly.

Domestic Network Call center number 080-808-0114

Gimpo

Big data platform for industrial technology innovation

Seoul

Information and communications technology (ICT), convergence, environmental technology, etc.

Ansan

Nuclear power plant devices, future communication technology, securing and correction of industrial technology standards, system convergence technology, etc.

Asan

Biological safety evaluation and regeneration/reconstruction industrial technology

Seocheon

Aviation security equipment

Gunsan

Verification of renewable energy technologies such as for the floating photovoltaic system

Gwangju

ICT convergence

Gwangyang

Verification of technologies for the recycling of industrial by products

Yeosu

Yeosu Smart Green Industrial Complex development, support for companies in the Honam region

Wonju

Biological safety testing, testing of manned/unmanned mid- to large-scale drones

Hwaseong

IT convergence product performance and functional safety

Cheonan

Medium and large secondary battery and used battery

Daejeon

Software quality certification and performance, safety, and conformance test

Daegu

Medical artificial intelligence (AI) big data platform

Busan

Professional technological training

Changwon

Changwon Smart Green Industrial Complex development, support for companies in Yeongnam/southeastern region

Jinju

Space parts, aviation electromagnetic technology, UAM, national defense/mechanical/shipbuilding equipment, noise and vibration control, environmental devices, etc.



An overseas network

China (Shanghai, Shenzhen)



United Arab Emirates

